

## DOCUMENT GUIDE TO CHARGES PYRENEES-ANDORRA AIRPORT

### I.- RIGHTS OF USE OF AIRPORT FACILITIES AND SERVICES

#### **I.1.- LANDING AND PARKING CHARGE.**

**Definition:**

A) Landing of aircrafts (use of runways by aircrafts and provision of services necessary for such use, apart from those of assistance on the ground for aircrafts, passengers or freight).

B) Parking of aircrafts (use of aircraft parking areas equipped as such in the airport).

**Obligatory payment:**

Airlines and other natural or legal persons that receive the above described services.

**1.- Commercial aviation.**

**Flight type scope:**

Passenger or freight transport service aircrafts managed by airlines offering this service to the public.

**Amount:**

Determined in function of the Maximum Take Off Weight (MTOW) and varying in function of the type of aircraft, route and operational timetable.

**2.- General and corporate aviation.**

**Flight type scope for general and corporate flights:**

Aircrafts for private use, whether individual or corporate, and not related to public access.

**Amount:**

Determined in function of aircraft weight and flight class.

MODE OF CHARGE	Aircraft weight levels in mT		
	Up to 2mT	More than 2mT	Helicopter
1 day fixed rate (in function of the airport timetable)	5€	10€	4€
10 days rate (free with an expiry period of 1 year)	30€	60€	24€
Monthly rate	30€	60€	24€
Annual rate	300€	600€	240€
Overnight stay of aircraft on the apron	3€	5€	2€

Training (up to 5 landings per day) (*)	5€	10€	4€
---	----	-----	----

(\*) From the sixth landing a rate of 5 € per landing will be invoiced for aircrafts with a weight equal or inferior to 2mT, 10 € per landing for aircrafts with a weight superior to 2mT, and 4 € per landing for helicopters.

## I.2.- SECURITY CHARGE.

### Definition:

Provision, for commercial flights, of passenger and baggage inspection and control in airport areas as well as emergency equipment and general security measures. A charge is levied for each departing passenger.

### Obligatory payment:

Departing passengers boarding in Spanish airports; when applicable, airline or entity with which the passenger has contracted transport.

**Amount: 1 € per departing passenger**

## I.3.- AIRPORT INFRASTRUCTURE AND COMPLEMENTARY FACILITY USE CHARGE (PASSENGERS).

### Definition:

Applied for the use, by passengers, of those airport terminal areas inaccessible to visitors, as well as complementary airport facilities

### Obligatory payment:

Airlines, entities and private individuals carrying passengers boarding at a Spanish airport, independently of the flight's ulterior intermediate segments and destination. For the calculation, a passenger is defined as any person who is not a member of the crew, the last understood as the pilot and co-pilot.

**Amount: 3€ per departing passenger**

## I.4.- INSURANCE CHARGE FOR THE ACCESS OF VEHICLES TO RESTRICTED AREAS

### Definition:

Cost of insurance for the access of vehicles to the airport restricted areas.

**Amount: 23.09 € per vehicle and day**

## II.2.- OFFICES AND PREMISES SPACE CHARGE.

### Definition:

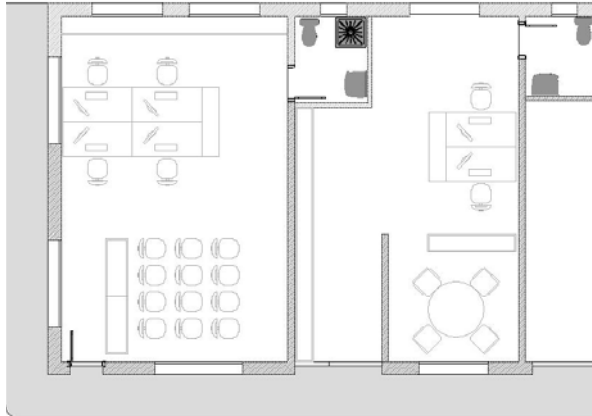
The use of office and premises space, of preferential or non-preferential nature, ceded under rental rights.

### Obligatory payment:

The user of authorized person.

### 1. Rooms in the multifunctional building:

The rooms in the multifunctional building can be rented for trainings or as working places.



**Room 1**

**Room 2**

- Room 1 area: 45 m<sup>2</sup> (including bathroom)
- Room 2 area: 40 m<sup>2</sup> (including bathroom)
- Technical equipments: voice and data, standalone air conditioning, Wi-Fi.

#### **Amount:**

##### A) Rental per m2:

##### A.1.) Per hour - day: 2€/m2/hour

- With a minimum cost of 50€
- With a maximum cost of 10€/m2/day

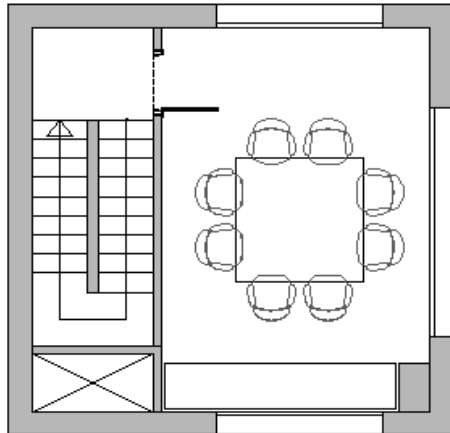
##### A.2.) Per longer periods:

Annual	15€/m2/month
Monthly (more than 3 months)	20€/m2/month
1 month	25€/m2/month

##### B) Rental of equipped working stations: the same rates as for rental per m2.

**2. Rooms in the social building:**

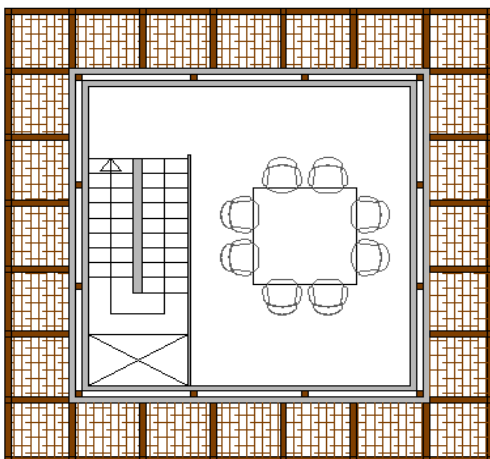
**MONTFERRER room (second floor) and RIBERA room (third floor)**



- Area: 16,5 m<sup>2</sup>
- Capacity: 8 persons
- Furniture: comfortable furniture that adds warmth and style to the rooms.
- Technical equipment: voice and data, standalone air conditioning, Wi-Fi.
- Accessibility: inside stairs, emergency stairs, elevator planned.

ROOM RENTAL	MORNING (09:30-13:00)	AFTERNOON (16:00-19:30)	WHOLE DAY (09.00-19.30)
Business meeting	85€	100€	130€
Meeting + lunch (catering not included)	105€	120€	150€

**Rental of FANAL room (fourth floor):**



- Area: 19 m<sup>2</sup>
- Capacity: 8 persons
- Furniture: comfortable furniture that adds warmth and style to the rooms.
- Technical equipment: voice and data, standalone air conditioning, Wi-Fi.
- Accessibility: inside stairs, emergency stairs, elevator planned.

Rental of 4th floor FANAL room	MORNING (09:30-13:00)	AFTERNOON (16:00-19:30)	WHOLE DAY (09.00-19.30)
Business meeting	120€	135€	165€
Meeting + lunch (catering not included)	140€	155€	185€

## **II.3.- CINEMATOGRAPHIC FILMING AND RECORDING AND ADVERTISING AND PHOTOGRAPHIC SHOOT CHARGE.**

### **Definition:**

Use of determined zone of an airport area for filming, recording and advertising and photographic shoots. When these imply the use of other services, supplies or consumption, they will be invoiced additionally.

### **Obligatory payment:**

The user or authorised person.

### **Amount:**

#### **1. Cinematographic filming:**

- Up to 2 hours: 200€
- Per additional hour: 150€

#### **2. Advertising broadcasts and shoots:**

300€

#### **3. Filming on runways or aprons:**

- Up to 2 hours: 400€
- Per additional hour: 300€

The use of services, supplies or consumption other than the explicitly detailed will be invoiced additionally.

## **2.- METHODS OF PAYMENT**

- Cash (in Euros)
- Credit card (VISA)

The corresponding taxes will be added to the above mentioned charges.